



**BM96S
PIZZA PREP TABLES
REPLACEMENT PARTS LIST**

EFFECTIVE FEBRUARY 15, 2017

Superseding All Previous Parts Lists.

The Company reserves the right to make substitution in the event that items specified are not available.

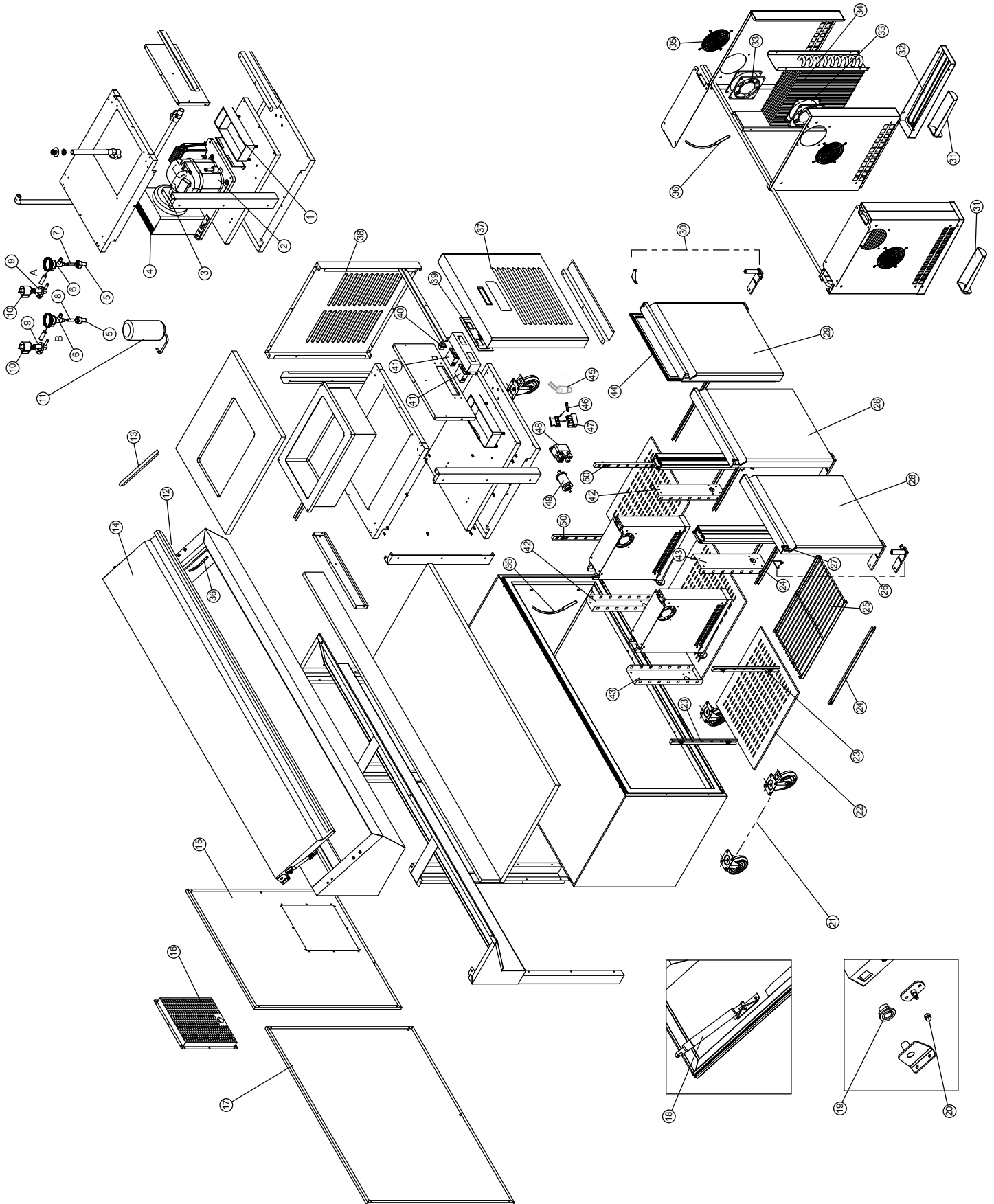
ERRORS: Descriptive and/or typographic errors are subject to correction.

MARSAL

175 East Hoffman Avenue, Lindenhurst, NY 11757 USA Telephone: (631) 226-6688 Fax: (631) 226-6890
www.marsalsons.com

P/N 82014 Rev A

BM96S PARTS



BM96S PARTS

REF. NO.	PART NO.	DESCRIPTION
1	80145	CONDENSATE PAN W/HEATING ELEMENT 300W-115V
2	80140	COMPRESSO CAE4450Z-A 115V 60HZ
3	80141	CONDENSER FINGUER GUARD&FAN HOLDER+MOTOR
4	80142	CONDENSER COIL STFT18T2R270 UL X STVF194
5	80049	TX VALVE WELDED ADAPTOR 6MM 2271M6S
6	80135	TX VALVE R404a MOD. 2231/M12S
7	80051	TX VALVE ORIFICE 2200/S 00
8	80052	TX VALVE ORIFICE 2200X/S 0X
9	80059	SOLENOID VALVE EVR10 3/8 ODF10MM
10	80060	DIN COIL ZB09 304011 110-120V/60Hz
11	80062	LIQUID RECEIVER RT-312V-TS 1,36LT
12	80149	LID GASKET SUPREME 96
13	80063	PAN SPACER MARSAL PREP TABLE
14	80064	S/S LID MARSAL 96"
15	80061	RIGHT HAND BACK PANEL
16	80129	BACK PANEL CONDENSING UNIT
17	80134	LEFT HAND BACK PANEL
18	80124	S/S LID PISTON 6x15xL80 F300
19	80037	NYLON BUSH FOR HINGE D.32 HOLE 14.2
20	80151	NYE LOCK DOME HEAD BOLT
21	80139	CASTORS KIT 4/5 DOORS
22	80152	HOLED BOTTOM SHELVE
23	80121	PILASTER PASTRY TABLES 46x66
24	80133	SHELVE GUIDE 606x11.5X14.5X21
25	80132	PLASTIC GRID. TAB.453x657MM ETL
26	80122	LEFT HAND DOOR HINGE KIT GOLD COUNTER
27	80153	BUSHING 0740.BB00
28	80154	LEFT HAND DOOR
29	80155	RIGHT HAND DOOR
30	80130	RIGHT HAND DOOR HINGE KIT GOLD COUNTER
31	80117	EVAPORATOR TRAY TROUGH MM.200
32	80143	EVAPORATOR TRAY PASTRY TABLES 46x66
33	80115	SQUARED FAN 120x120x38 TN
34	80114	EVAPORATOR COIL PASTRY TABLE 46x66
35	80156	SQUARE FAN GUARD

REF. NO.	PART NO.	DESCRIPTION
36	80010	TEMP PROBE 3M SN691300
37	80157	FRONT PANEL
38	80158	RIGHT PANEL MARSAL TABLES
39	80131	SEE-THROUGH CNTRL PROTECTION 260x101 MARSAL
40	80159	MAIN SWITCH GREEN 250V 20A
41	80112	CONTROL UN.EWP 974 115V AMBER
42	80120	FRONT/REAR PILASTER 89X40
43	80144	FRONT/REAR PILASTER 117x40
44	80113	DOOR GASKET 533x624
45	80128	PRESSURE SWITCH NSDLA00A39117
46	80119	FUSE 5x20 1A 250V UL
47	80160	FUSE HOLDER B4PA283WP 1P 00109901 UL
48	80127	POWER RELAY FINDER 65.31 110V 20A
49	80118	FILTER DRIER
50	80147	LITTLE SUPPORT X POST RACK L26X23PP