



**EDO SERIES: EDO 42, EDO 57 AND EDO 2136
ELECTRICAL PIZZA OVENS
REPLACEMENT PARTS LIST**

EFFECTIVE APRIL 20, 2017

Superseding All Previous Parts Lists.

The Company reserves the right to make substitution in the event that items specified are not available.

ERRORS: Descriptive and/or typographic errors are subject to correction.

MARSAL

44 Lakeside Avenue, Burlington, VT 05401 USA Telephone: (802) 658-6600 Fax: (802) 864-0183
www.marsalsons.com

P/N 72145 Rev C

TABLE OF CONTENTS

CONTROL PANEL

| | |
|----------------|---|
| ALL OVENS..... | 3 |
|----------------|---|

ELECTRICAL PANEL

| | |
|-------------------------------|---|
| EDO 42 AND EDO 576 OVENS..... | 4 |
|-------------------------------|---|

| | |
|--------------------|---|
| EDO 2136 OVEN..... | 5 |
|--------------------|---|

BAKING COMPARTMENT COMPONENTS

| | |
|------------------|---|
| EDO 42 OVEN..... | 6 |
|------------------|---|

| | |
|------------------|---|
| EDO 57 OVEN..... | 7 |
|------------------|---|

| | |
|--------------------|---|
| EDO 2136 OVEN..... | 8 |
|--------------------|---|

DOOR PARTS

| | |
|------------------|---|
| EDO 42 OVEN..... | 9 |
|------------------|---|

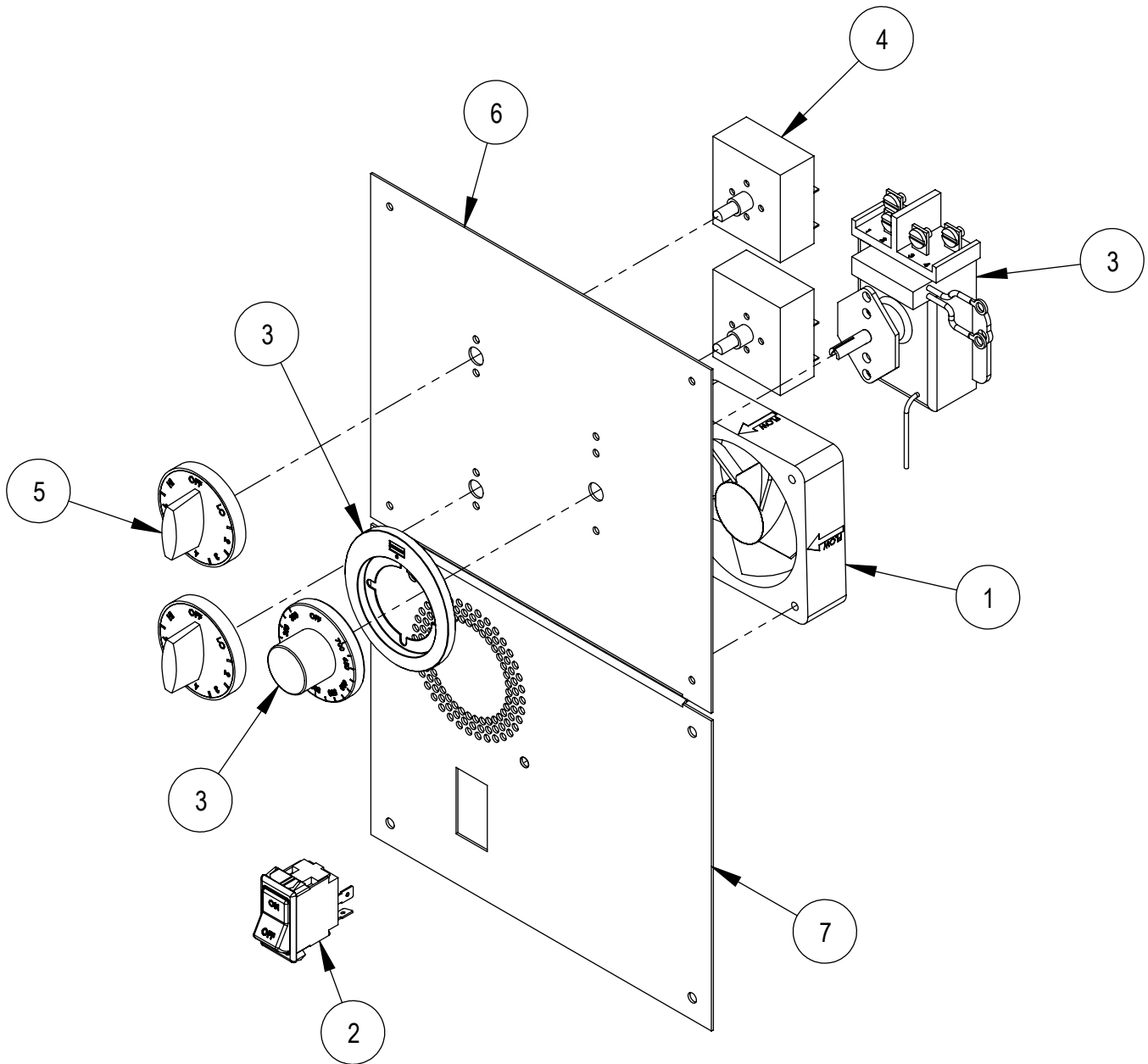
| | |
|------------------|----|
| EDO 57 OVEN..... | 10 |
|------------------|----|

| | |
|--------------------|----|
| EDO 2136 OVEN..... | 11 |
|--------------------|----|

| | |
|------------------|----|
| ACCESSORIES..... | 12 |
|------------------|----|

CONTROL PANEL

ALL OVENS



| REF. NO. | PART NO. | DESCRIPTION |
|----------|----------|-------------------------|
| 1 | 70438 | FAN, 230VAC, 50-60HZ |
| 2 | 71567 | ON/OFF SWITCH |
| 3 | 70435 | EDO THERMOSTAT |
| 4 | 70437 | INFINITE CONTROL |
| 5 | 70445 | KNOB, INFIINITE CONTROL |

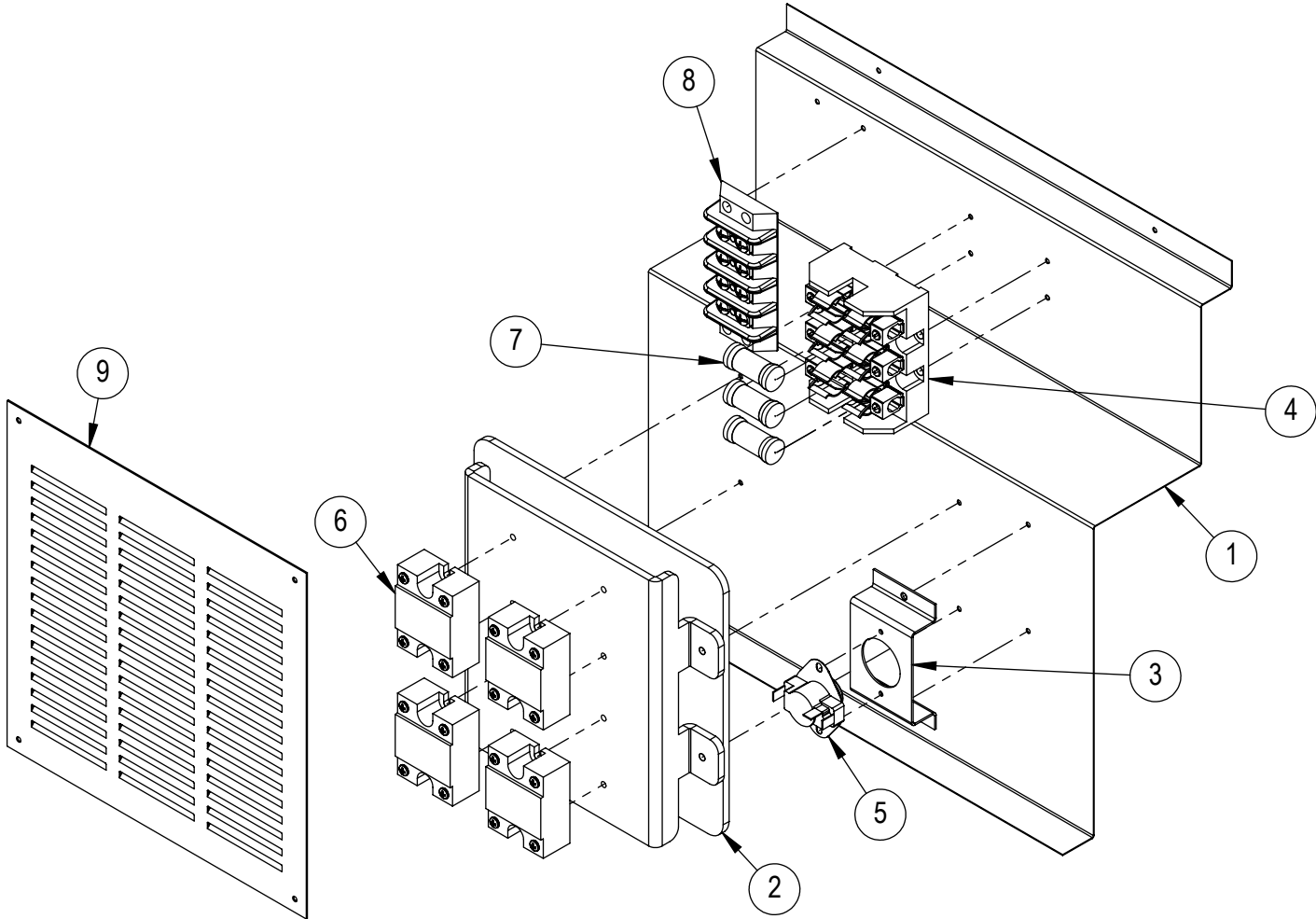
| REF. NO. | PART NO. | DESCRIPTION |
|----------|----------|----------------------------|
| | 71550 | DECAL, EDO CONTROL PANEL** |
| 6 | 71549 | EDO TEMP CONTROL PANEL |
| 7 | 71547 | EDO POWER CONTROL PANEL |

* THERMOSTAT KNOB ONLY- P/N 70446

** DECAL NOT SHOWN

ELECTRICAL PANEL

EDO 42 AND EDO 57 OVENS

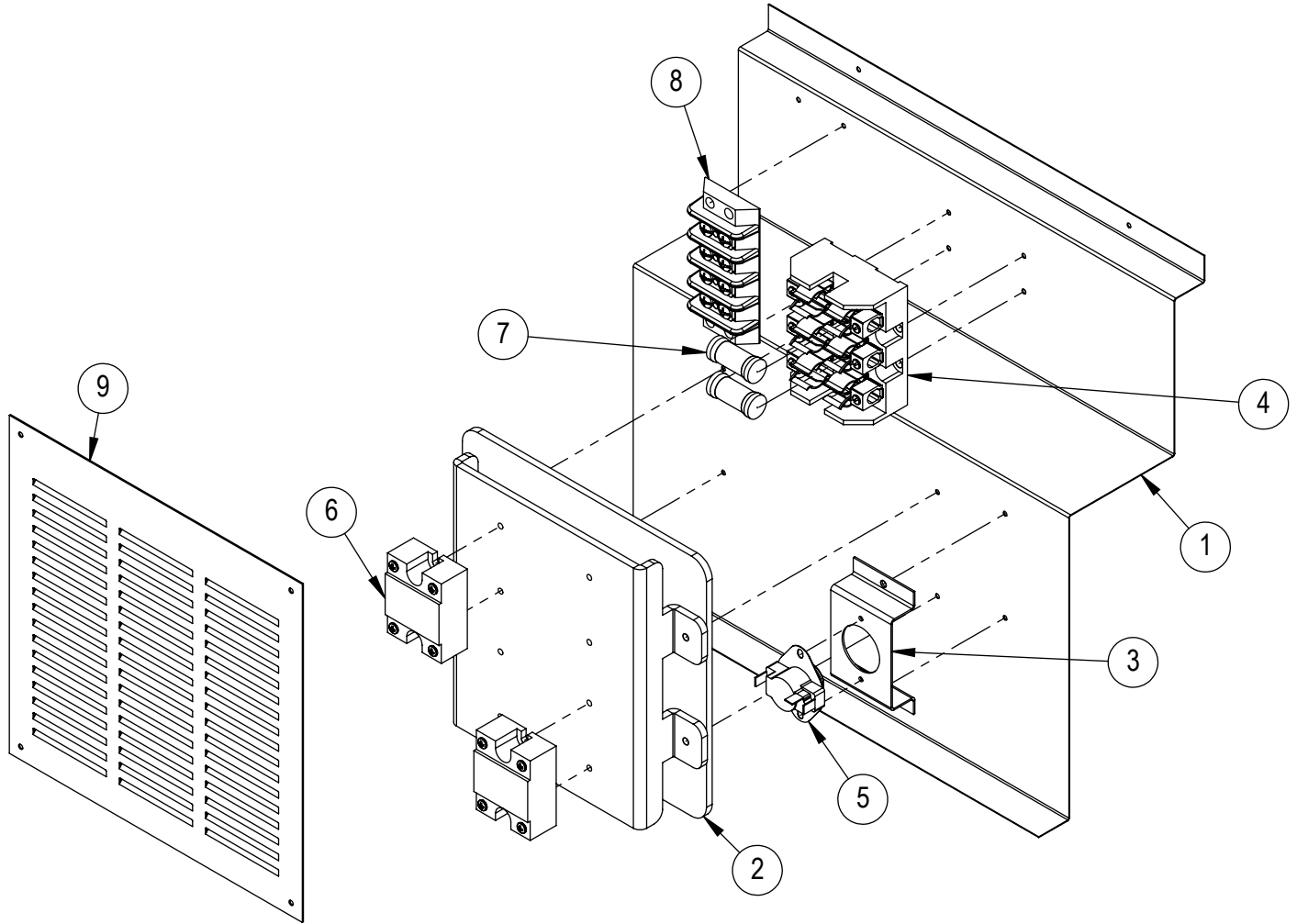


| REF. NO. | PART NO. | DESCRIPTION |
|----------|----------|----------------------------------|
| 1 | 71543 | EDO ELECTRICAL PANEL |
| 2 | 71551 | EDO HEATSINK ASSY |
| 3 | 71541 | EDO HI LIMIT BRACKET |
| 4 | 71562 | FUSE BLOCK, 3 POLE, 300V, 31-60A |
| 5 | 70444 | HI-LIMIT, SNAP DISC |

| REF. NO. | PART NO. | DESCRIPTION |
|----------|----------|---------------------------|
| 6 | 70436 | RELAY, SOLID STATE |
| 7 | 70439 | FUSE, 300VAC, 40A |
| 8 | 71565 | TERMINAL BLOCK, 600V, 30A |
| 9 | 71568 | EDO LOUVER PANEL |

ELECTRICAL PANEL

EDO 2136 OVEN

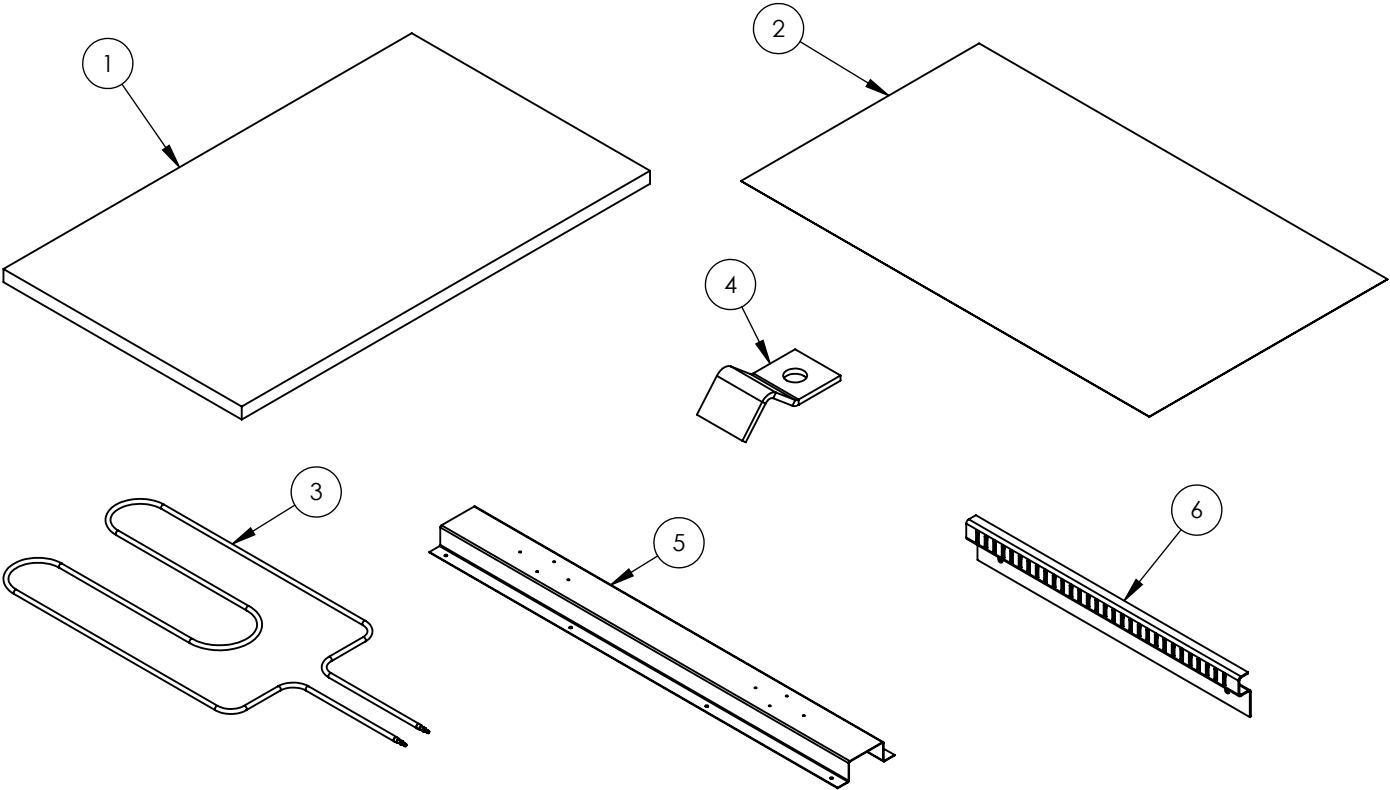


| REF. NO. | PART NO. | DESCRIPTION |
|----------|----------|----------------------------------|
| 1 | 71543 | EDO ELECTRICAL PANEL |
| 2 | 71551 | EDO HEATSINK ASSY |
| 3 | 71541 | EDO HI LIMIT BRACKET |
| 4 | 71562 | FUSE BLOCK, 3 POLE, 300V, 31-60A |
| 5 | 70444 | HI-LIMIT, SNAP DISC |

| REF. NO. | PART NO. | DESCRIPTION |
|----------|----------|---------------------------|
| 6 | 70436 | RELAY, SOLID STATE |
| 7 | 70439 | FUSE, 300VAC, 40A |
| 8 | 71565 | TERMINAL BLOCK, 600V, 30A |
| 9 | 71568 | EDO LOUVER PANEL |

BAKING COMPARTMENT COMPONENTS

EDO 42 OVEN

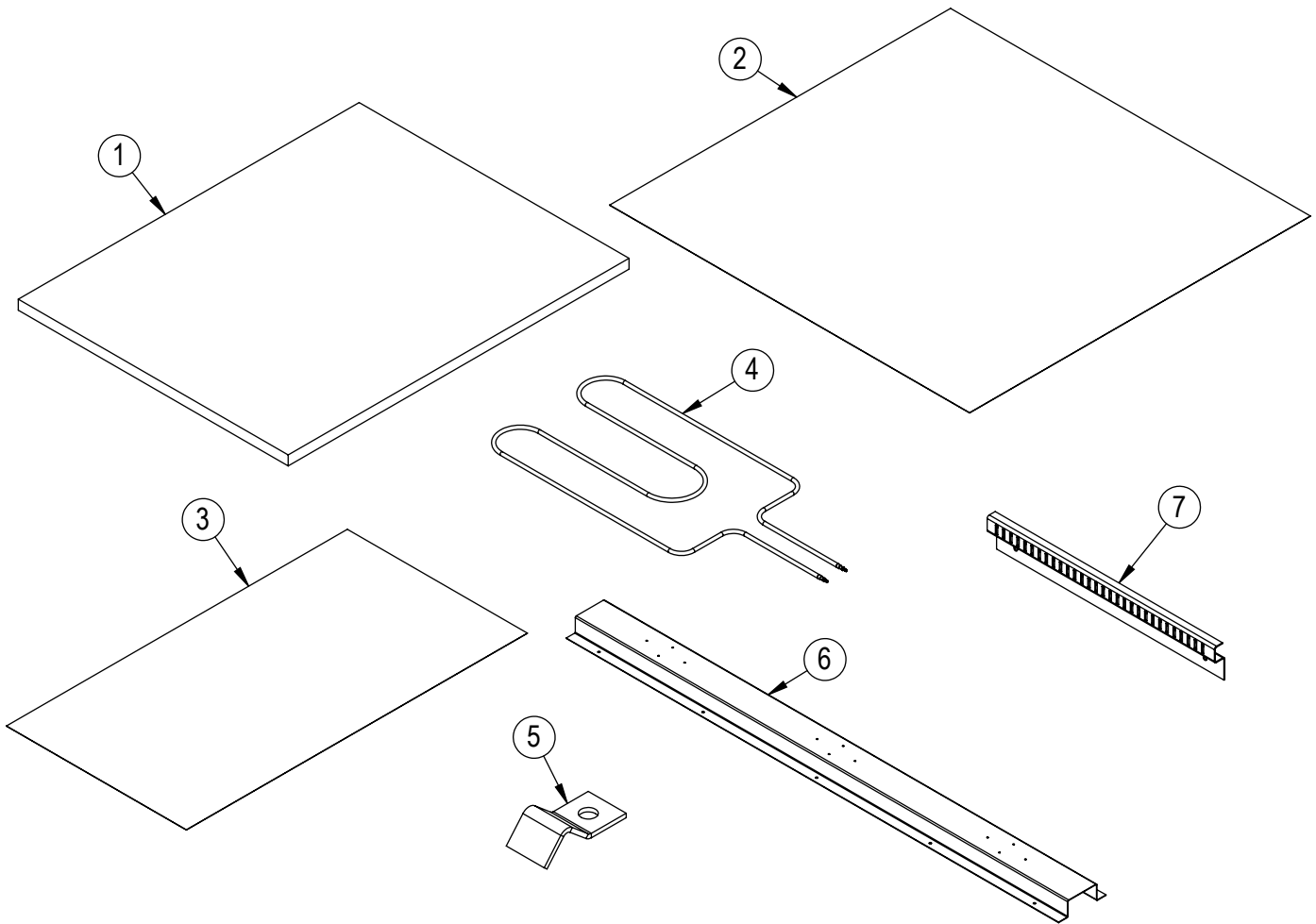


| REF. NO. | PART NO. | DESCRIPTION |
|----------|----------|------------------------|
| 1 | 70390 | DECK STONE 21 X 36 X 1 |
| 2 | 71519 | BRICK PLATE |
| 3 | 70440 | ELEMENT, 208VAC |
| 3 | 70441 | ELEMENT, 240VAC |

| REF. NO. | PART NO. | DESCRIPTION |
|----------|----------|-----------------------|
| 4 | 71556 | ELEMENT HOLDOWN CLIP |
| 5 | 71592 | ELEMENT CHANNEL |
| 6 | 71542 | THERMOSTAT BULB GUARD |

BAKING COMPARTMENT COMPONENTS

EDO 57 OVEN

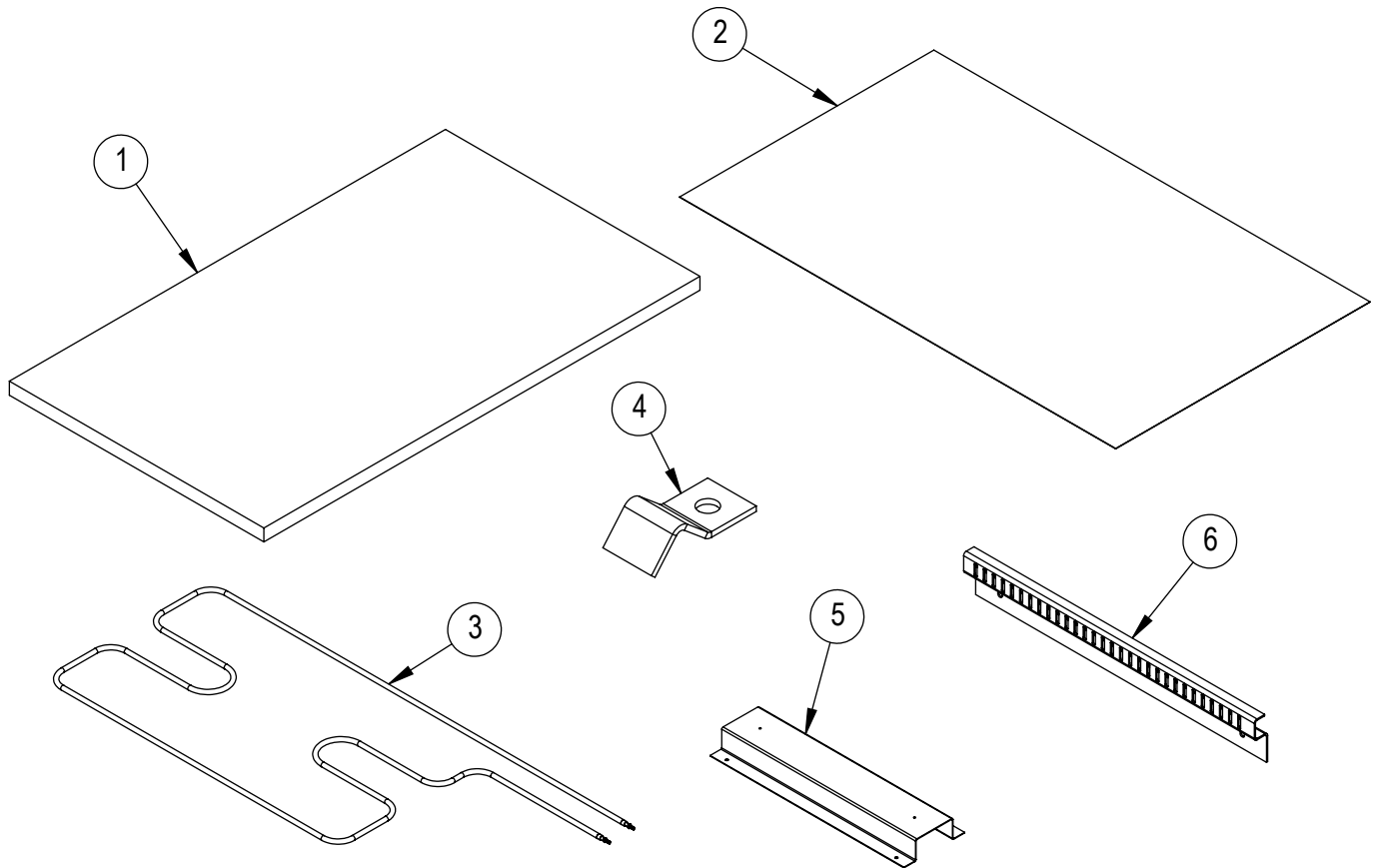


| REF. NO. | PART NO. | DESCRIPTION |
|----------|----------|--------------------------------|
| 1 | 70248 | DECK STONE, 28-1/2" X 36" X 1" |
| 2 | 71634 | BRICK PLATE, LH |
| 3 | 71635 | BRICK PLATE, RH |
| 4 | 70440 | ELEMENT, 208VAC |

| REF. NO. | PART NO. | DESCRIPTION |
|----------|----------|-----------------------|
| 4 | 70441 | ELEMENT, 240VAC |
| 5 | 71556 | ELEMENT HOLDOWN CLIP |
| 6 | 71643 | ELEMENT CHANNEL |
| 7 | 71542 | THERMOSTAT BULB GUARD |

BAKING COMPARTMENT COMPONENTS

EDO 2136 OVEN

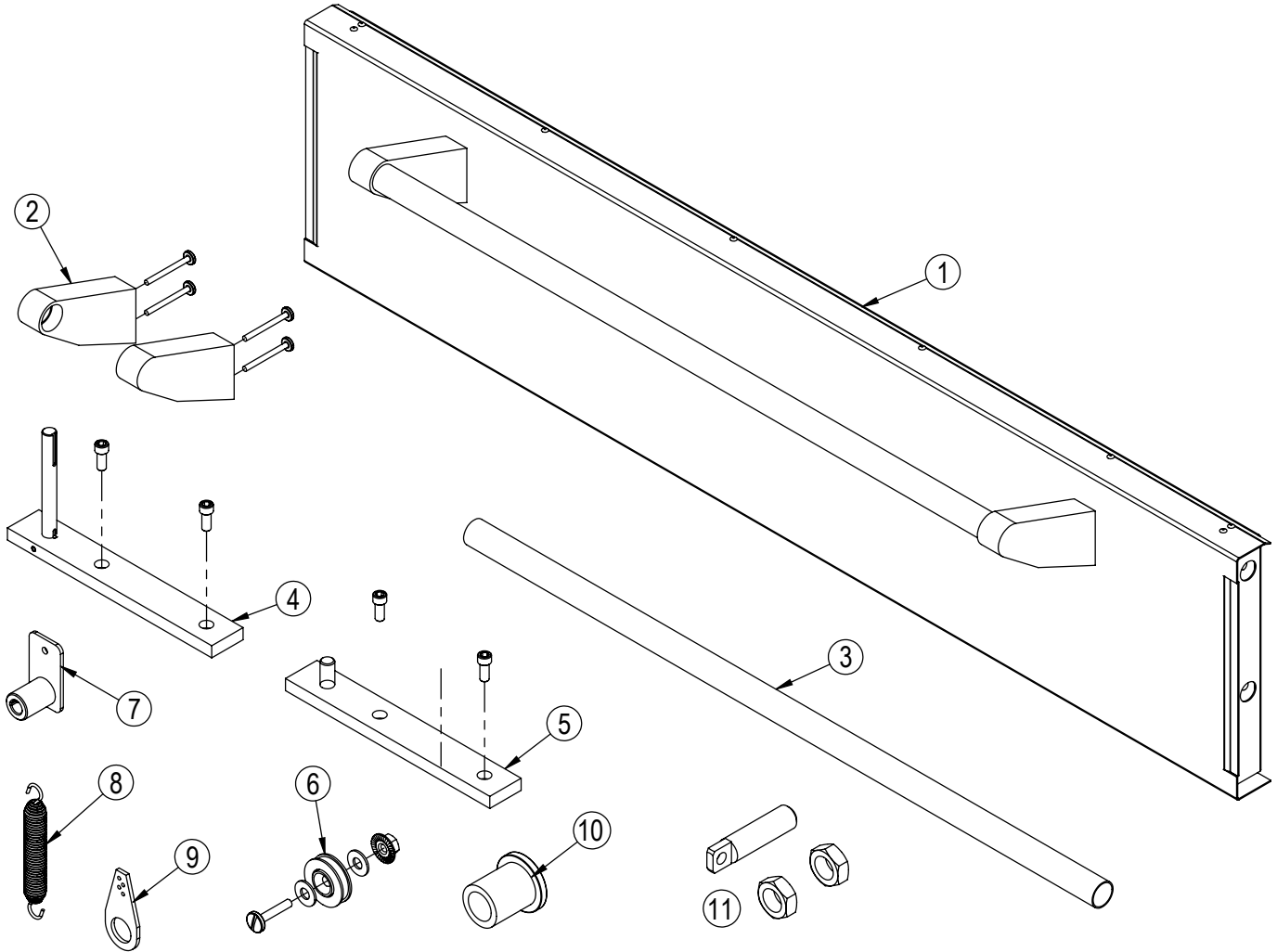


| REF. NO. | PART NO. | DESCRIPTION |
|----------|----------|------------------------|
| 1 | 70390 | DECK STONE 21 X 36 X 1 |
| 2 | 71519 | BRICK PLATE |
| 3 | 70442 | ELEMENT, 208VAC |
| 3 | 70443 | ELEMENT, 240VAC |

| REF. NO. | PART NO. | DESCRIPTION |
|----------|----------|-----------------------|
| 4 | 71556 | ELEMENT HOLDDOWN CLIP |
| 5 | 71524 | ELEMENT CHANNEL |
| 6 | 71542 | THERMOSTAT BULB GUARD |

DOOR PARTS

EDO 42 OVEN

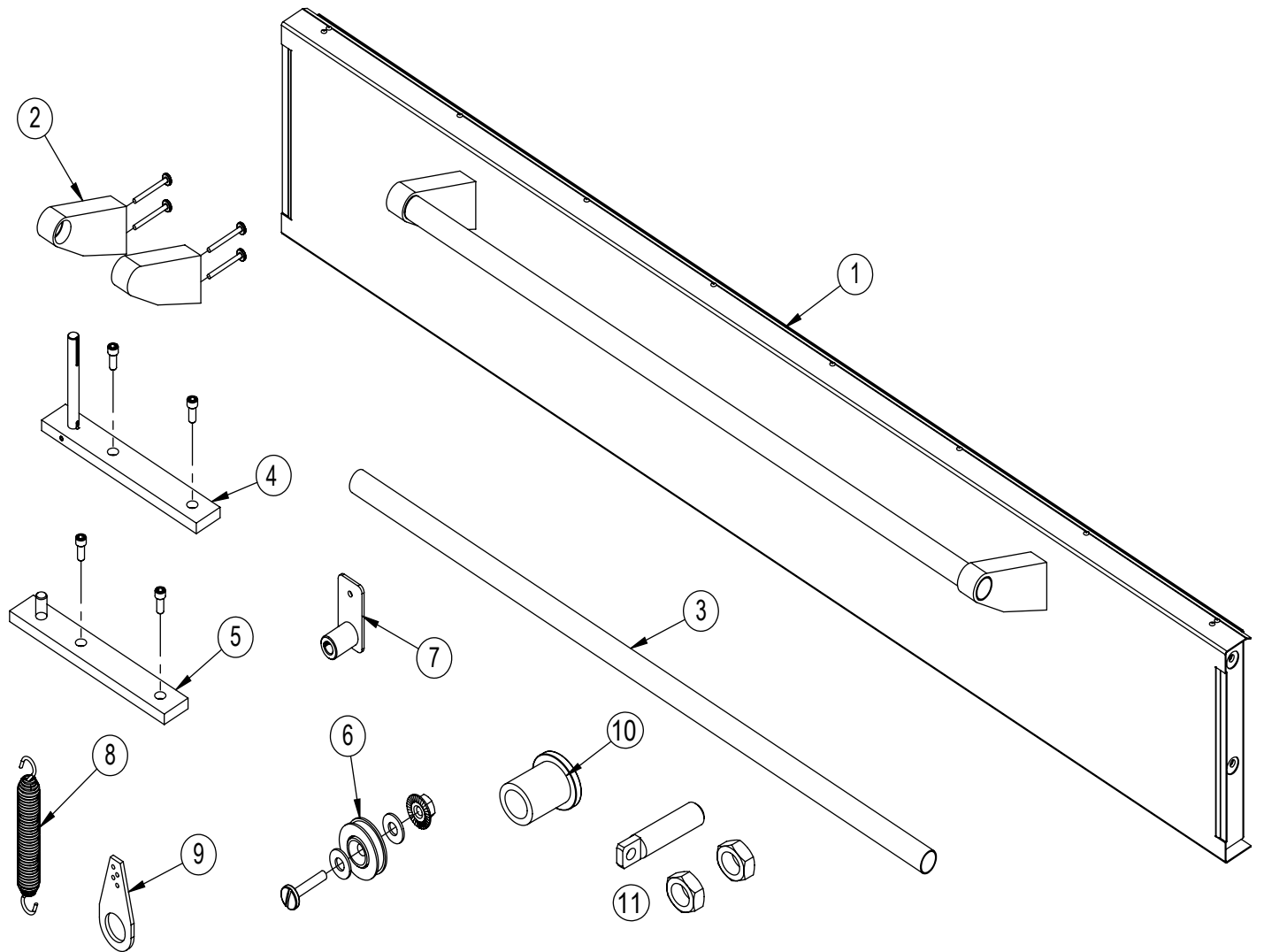


| REF. NO. | PART NO. | DESCRIPTION |
|----------|----------|-----------------------------|
| 1 | 71928 | BAKING DOOR SVC KIT, EDO42 |
| 2 | 71892 | SD DOOR HANDLE BRACKET KIT |
| 3 | 70429 | 30" DOOR HANDLE, S/S |
| 4 | 71986 | OVEN DOOR HINGE KIT, LH |
| 5 | 71890 | 10" OVEN DOOR HINGE KIT, RH |
| 6 | 71910 | SPRING WHEEL KIT |

| REF. NO. | PART NO. | DESCRIPTION |
|----------|----------|--------------------|
| 7 | 71569 | COUPLING ASSY |
| 8 | 70416 | SPRING |
| 9 | 71561 | TEAR DROP, 4-3/16" |
| 10 | 70154 | BUSHING, DOOR PIN |
| 11 | 72286 | SPRING ANCHOR KIT |

DOOR PARTS

EDO 57 OVEN

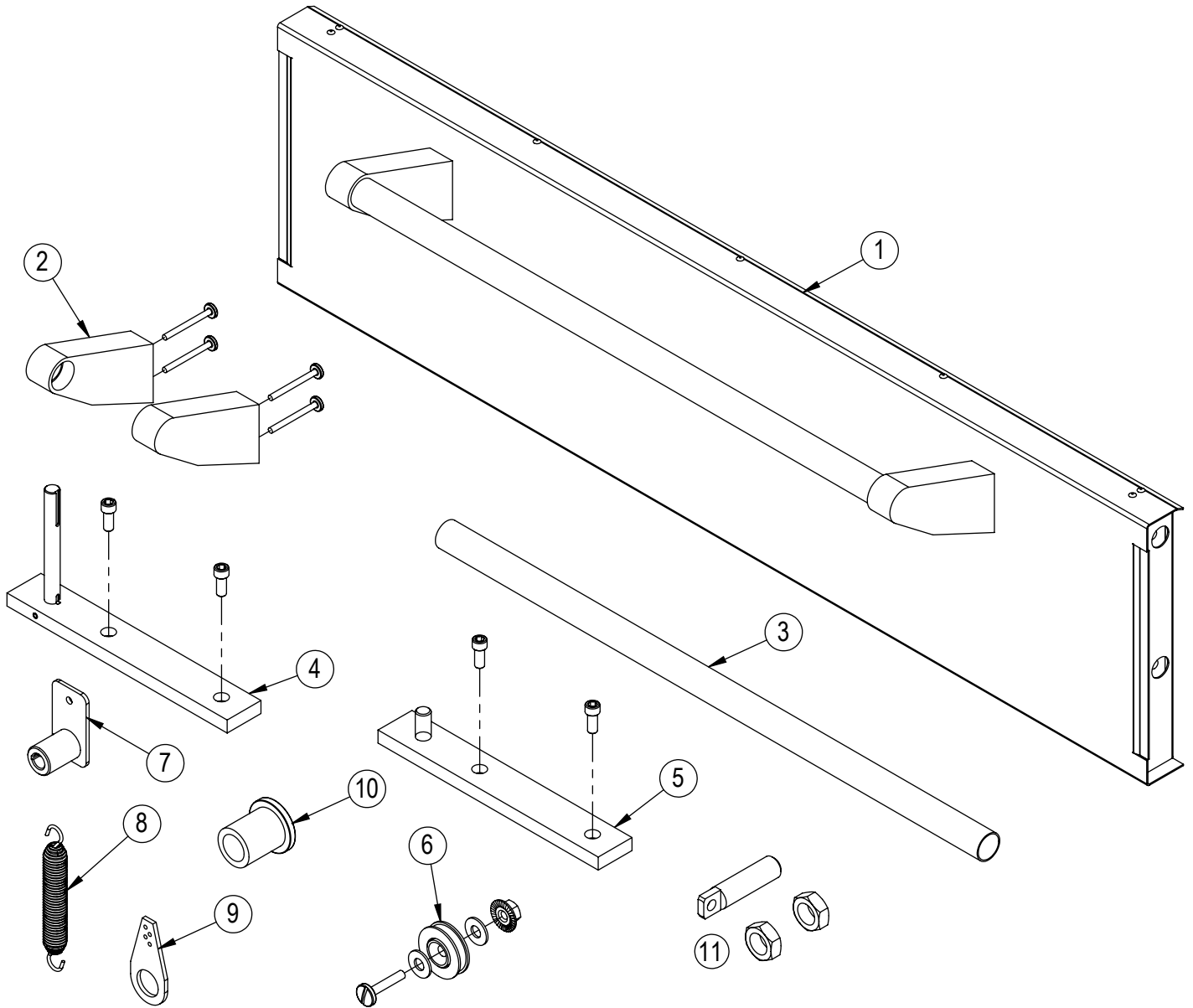


| REF. NO. | PART NO. | DESCRIPTION |
|----------|----------|-----------------------------|
| 1 | 71912 | BAKING DOOR SVC KIT, SD660 |
| 2 | 71892 | SD DOOR HANDLE BRACKET KIT |
| 3 | 70430 | 36" DOOR HANDLE, S/S |
| 4 | 71986 | OVEN DOOR HINGE KIT, LH |
| 5 | 71890 | 10" OVEN DOOR HINGE KIT, RH |
| 6 | 71910 | SPRING WHEEL KIT |

| REF. NO. | PART NO. | DESCRIPTION |
|----------|----------|--------------------|
| 7 | 71624 | COUPLING ASSY |
| 8 | 70416 | SPRING |
| 9 | 71561 | TEAR DROP, 4-3/16" |
| 10 | 70154 | BUSHING, DOOR PIN |
| 11 | 72286 | SPRING ANCHOR KIT |

DOOR PARTS

EDO 2136 OVEN

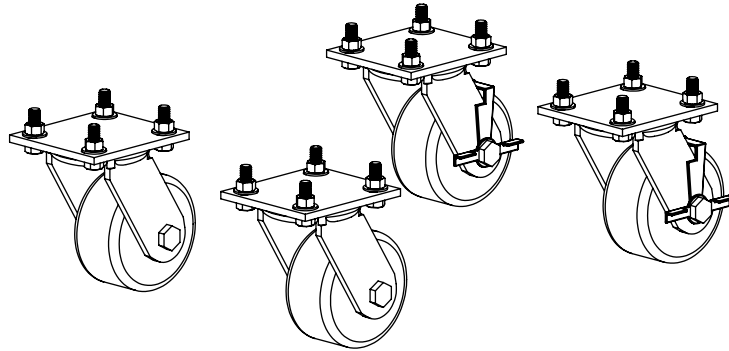


| REF. NO. | PART NO. | DESCRIPTION |
|----------|----------|------------------------------|
| 1 | 71927 | BAKING DOOR SVC KIT, EDO2136 |
| 2 | 71892 | SD DOOR HANDLE BRACKET KIT |
| 3 | 70431 | 24" DOOR HANDLE, S/S |
| 4 | 71986 | OVEN DOOR HINGE KIT, LH |
| 5 | 71890 | 10" OVEN DOOR HINGE KIT, RH |
| 6 | 71910 | SPRING WHEEL KIT |

| REF. NO. | PART NO. | DESCRIPTION |
|----------|----------|--------------------|
| 7 | 71569 | COUPLING ASSY |
| 8 | 70416 | SPRING |
| 9 | 71561 | TEAR DROP, 4-3/16" |
| 10 | 70154 | BUSHING, DOOR PIN |
| 11 | 72286 | SPRING ANCHOR KIT |

ACCESSORIES

ALL OVENS



| REF. NO. | PART NO. | DESCRIPTION |
|----------|----------|-------------------|
| 1 | 72546 | CASTERS, SET OF 4 |